

# Empowering the Future.

Company Profile



**Our purpose  
is designing a  
smarter future  
for a better life.**

We develop and provide integrated solutions in the fields of energy and mobility, shaping the future of our cities with the ever-present digital connectivity.

# Energy

↘  
We develop solutions for T&D that promote the energy transition, aiming to provide the best and most innovative solutions in terms of efficiency, resilience and reliability.

# Mobility

↘  
We want to anticipate electric mobility and sustainable transport solutions, contributing to the acceleration of the decarbonisation of the sector and diversifying the available options.



About us

# Creators of integrated solutions, from:

Technology  
Development



Products  
Manufacturing



Systems  
Integration



O&M  
Services



Always keeping in mind our legacy

# 76 years of technological innovation.

1948

↓  
Start of the Efacec project

Electro-Moderna,  
ACEC – Ateliers de  
Constructions  
Électriques e CUF –  
Companhia União  
Fabrill

1987

↓  
Start of  
Transportation  
operations

+  
Start of  
Internationalization

2020

↓  
Launch of the  
new Modular  
System  
concept

+  
Launch of the  
new Power  
Transformer

2022

↓  
Conclusion of  
the Odense Light  
Rail, Denmark

One of the largest  
Portuguese engineering  
projects carried out  
internationally in the  
sustainable mobility  
area

2024

↓  
Launch of the new  
high-power electric  
charger – QC180

+  
First charging stations  
for battery-powered  
trains (Battery Electric  
Multiple Units) in  
Denmark

1983

↓  
Start of  
Automation  
operations

2009

↓  
Launch of the  
Electric Mobility  
project

2021

↓  
Launch of new  
Electric Mobility  
products

with the new concept  
of Modular System

+  
Modular  
Transformer  
and XBarrier  
100 win the Red  
Dot Awards

2023

↓  
75  
years

+  
Start of the  
telematics and  
signaling contract  
for the first BRT  
system in Portugal  
for the Mondego  
Mobility System



# Recent innovations and recognitions

## Energy Substation



→ **Conclusion of the Alcoutim project, Portugal:** an engineering, supply, construction, and commissioning project, where the first Efacec Modular Transformers are installed.

## Light Rail



→ **Conclusion of the Odense project in Denmark:** development and installation of the electromechanical component.

## QC180



→ **Launch of a new high-power electric charger:** an all-in-one solution based on Efacec's modular principles, developed with total focus on ensuring customer availability by incorporating an active monitoring and remote upgrade system, enabling a more efficient and reliable operation.

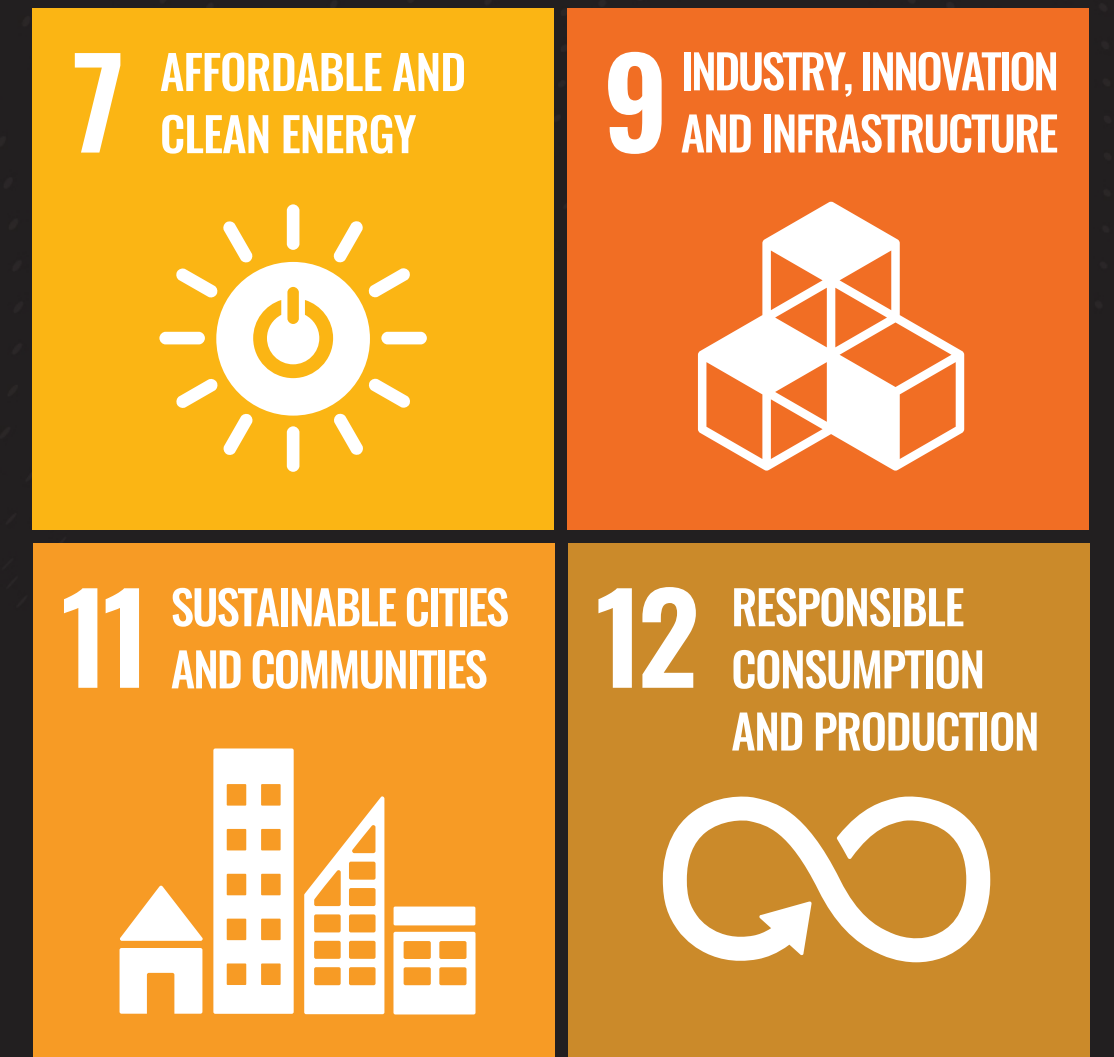


Our commitment to all our stakeholders:

# New Sustainable Development Goals (SDGs)

We reinforce and fulfill our promise to impact society, drive change and contribute to the necessary transformation.

Focusing on these four SDGs, we can act more incisively and contribute more effectively to the implementation of solutions to some of the problems facing the world.





**What  
moves  
us**

## Reliability

We are rigorous in every step of our production cycle: innovation, creation, development, and delivery. Our customers and users can rely on every solution.

## Sustainability

We are fully committed to our role in building a better future, inside and outside of Efacec, focusing on providing integrated and efficient solutions with a significant impact on the economy, society and environment.

## Expertise

We are driven by innovation and experience. Our know-how allows us to think of each project in every dimension of it, offering integrated and turn-key solutions.

## Boldness

We are eager to challenge ourselves in order to overcome our own achievements, anticipate solutions and lead the market. That is why we don't have a comfort zone.

## Humanity

We are a team made of people and for people. Our team, suppliers, clients, and users are part of our very essence and are our main reason to believe in and prepare a better future.



# Our world

Efacec has a global footprint, with a presence in 13 countries and sales in more than 88 countries.



● Head Office

● Manufacturing units and branches

● Countries where Efacec has sales



# Efacec in 2023



**1,911**  
Employees

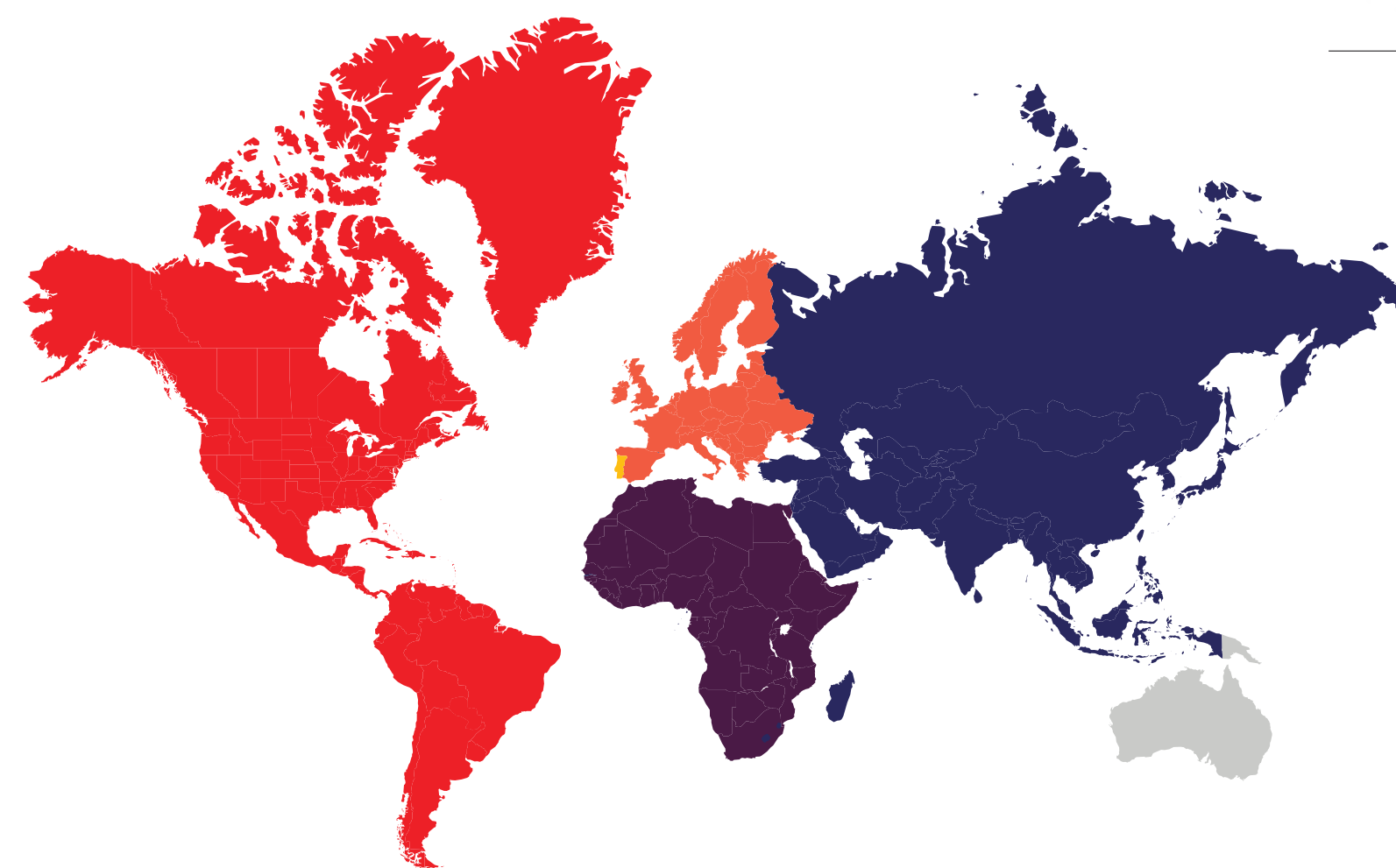


**85%**  
in Portugal

**15%**  
in the World

## Active Markets

Revenue per region, million euros



**35%**  
in Portugal

**65%**  
in the World

- Portugal → 51
- Europe → 67
- Americas → 18
- Africa → 8
- Middle East and Asia → 2



# Our clients include some of the world's biggest players.





# Our world of empowerment

We offer a comprehensive portfolio, promoting the energy transition and offering tailor-made solutions according to the specific needs of each client and market.

We anticipate and shape the future through transformers, switchgear, automation solutions, energy, transportation, shared and electric mobility.





# Energy

We develop solutions for T&D that promote the energy transition, aiming to provide the best and most innovative solutions in terms of efficiency, resilience and reliability.



# Energy

# What we do

## Transformers

---

- **Power transformers**
  - Shell
  - Core
  - Core modular system
- **Mobile & portable solutions**
- **Distribution transformers**
- **Commissioning, maintenance and repair**
- **Monitoring and upgrading**

## Switchgear

---

- **Primary distribution**
- **Secondary distribution**
- **Compact transformer stations**

## Energy

---

- **Turnkey projects (EPC) of electrical and mechanical infrastructure for the industrial, transmission and distribution sectors**

## Automation

---

- **Advanced power grid management systems**
- **Substation protection, automation, and control systems**
- **Distribution and MV/LV networks**
- **Direct current power systems and UPS**



# Energy Reference projects

## Transformers



### → Alto Tâmega hydroelectric complex, Portugal

Manufacture and supply of transformers for the three plants:

- two 245MVA 410kV transformers for Daivões
- four 65MVA 410kV transformers for Gouvães
- two 90MVA 410kV transformers for Tâmegat

## Switchgear



### → Cells for substations, Dubai

Supply of 350 cells of 11kV for substations for DEWA (Dubai Electricity & Water Authority)

## Energy



### → Alcoutim project, Portugal:

Engineering, supply, construction, and commissioning project, where the first Efacec Modular Transformers are installed.

## Automation



### → National Command and Control Centre, Portugal

Command and control centre for the national electricity grid, covering more than 6 million users



Energy → Transformers

# Our Portfolio and Expertise

## Power transformers



- Shell up to 1200MVA and 550kV (BIL 1675kV)
- Core até 350MVA e 550kV (BIL 1550kV)
- Core modular system from 10MVA up to 170MVA and 400kV
- Sustainable, green and eco-efficient power transformers (ester filled)

## Distribution Transformers



- Oil-immersed from 50kVA up to 20MVA and 72.5kV
- Sustainable, green and eco-efficient distribution transformers (ester filled)

## Mobile & portable solutions



- Up to 90MVA and 245kV
  - Conventional or hybrid isolation power transformers
  - Air, gas, or hybrid insulated equipment
  - Single or multiple trailers, as well as portable skid or container modules

## Service



- Installation and commissioning
- Maintenance, repair and upgrading
- Condition monitoring



Energy → Switchgear

# Our Portfolio and Expertise

## Primary Distribution



→ Air-insulated armored switchboards with withdrawable vacuum cut-out circuit breaker

### RATINGS

Solutions up to 24kV 50kA 4000A and to 36kV 31.5kA 3150A

## Secondary Distribution



→ Compact or modular switchboards, with fluoride-free option (F-gas)  
→ Solid insulation and vacuum cut-off reclosers

### RATINGS

Power distribution solutions up to 36kV

## Compact Substations



→ Prefabricated solutions with concrete or metallic casing  
→ Centres for distribution, renewable applications and electric mobility

### RATINGS

Power distribution solutions up to 36kV



Energy → Energy

# Our Portfolio and Expertise

## T&D Substations



→ **Complete turn-key solutions**

- MV, HV and EHV Substations up to 500kV
- AIS, GIS, Hybrid
- Digital Substations
- Greenfield and Brownfield



Energy → **Automation**

# Our Portfolio and Expertise

## Grid Management



### → Advanced management solutions

- ADMS/OMS/MGMS for distribution
- SCADA/EMS/GMS for transmission and generation
- SCADA/REMS for renewable energy generation
- SCADA for railways, metro, water, and technical systems

## PAC | Protection, Automation & Control



### → Automation of T&D substations

- Automation of power generation
- Terminal remote units
- Protection relays
- Railway systems
- Automation of distribution and MV/LV grids

## Power Systems



### → Industrial battery chargers in 24V, 48V, 110V and 220V

- UPS (Uninterruptible Power Supply)



# Mobility

We aim to anticipate solutions for electric mobility and sustainable transportation, contributing to the acceleration of sector decarbonisation and diversifying choices.



# Mobility

# What we do

## Transportation

---

- **Products and turnkey solutions for Railway, Metro, Light Rail and Roadway**
  - Traction and energy
  - Signalling and railway safety
  - Telematics and telecommunications
  - Command and control centre
  - Maintenance and support services

## Electric Mobility

---

- **Full range of electric vehicles charging solutions for implementation in the public or private domain**
  - Alternating current chargers, and fast, ultra-fast and high-power direct current chargers
- **EVCore and EVCore LMS charging point network management platform**
- **Preventive and corrective maintenance of electric vehicle chargers**



# Mobility Reference projects

## Transportation



→ Odense Light Rail, Denmark

## Electric Mobility



→ Quick charging, QC60/ 90/ 120



Mobility → **Transportation**

# Our Portfolio and Expertise

**Signalling and Railway Safety**



- Railway signalling SIL4 - AEGIS by Efacec®
- Level crossings - XSafe by Efacec®

**Traction and Energy**



- AC and DC traction substations
- Mobile/compact substations
- Substation control systems
- Catenary
- Battery train charging systems
- Onshore power supply (OPS) systems
- Auxiliary power supply systems
- Tunnel ventilation

**Telematics and Telecommunications**



- Operation support system - TimeKeeper by Efacec®
- Depot and workshop management system - TramKeeper
- Passenger information (visual, sound and on board)
- Security and surveillance
- Communications and radio systems
- Telecommunications infrastructures

**Command and control**



- **EFARAIL®: Operation and management platform for railways, metro and light rail integrating:**
  - Security Systems
  - Operational management systems
  - Rail command and control systems
  - Communications
  - SCADA



Mobility → Electric Mobility

# Our Portfolio and Expertise

## DC (Direct Current)



→ **Quick charging stations**

- Compact

## Management Software



→ **EVCORE + EVCORE LMS**

- Central management software for electric vehicle infrastructure
- Scalable solution, easy to configure and monitor as appropriate
- User-friendly, with smart alarm reporting facility

## AC (Alternating Current)



→ **Designed for the public domain, where simple and functional use is important**

- Highly flexible and cost-effective solution
- Multiple chargers in one location



# Participating in a global future.

We don't know what the future holds, but we know that we want to be the first to deliver innovative and sustainable solutions that improve everyone's life.

Because each of us has a unique and special power to transform the world right now, by looking into the future.



# Thank you!